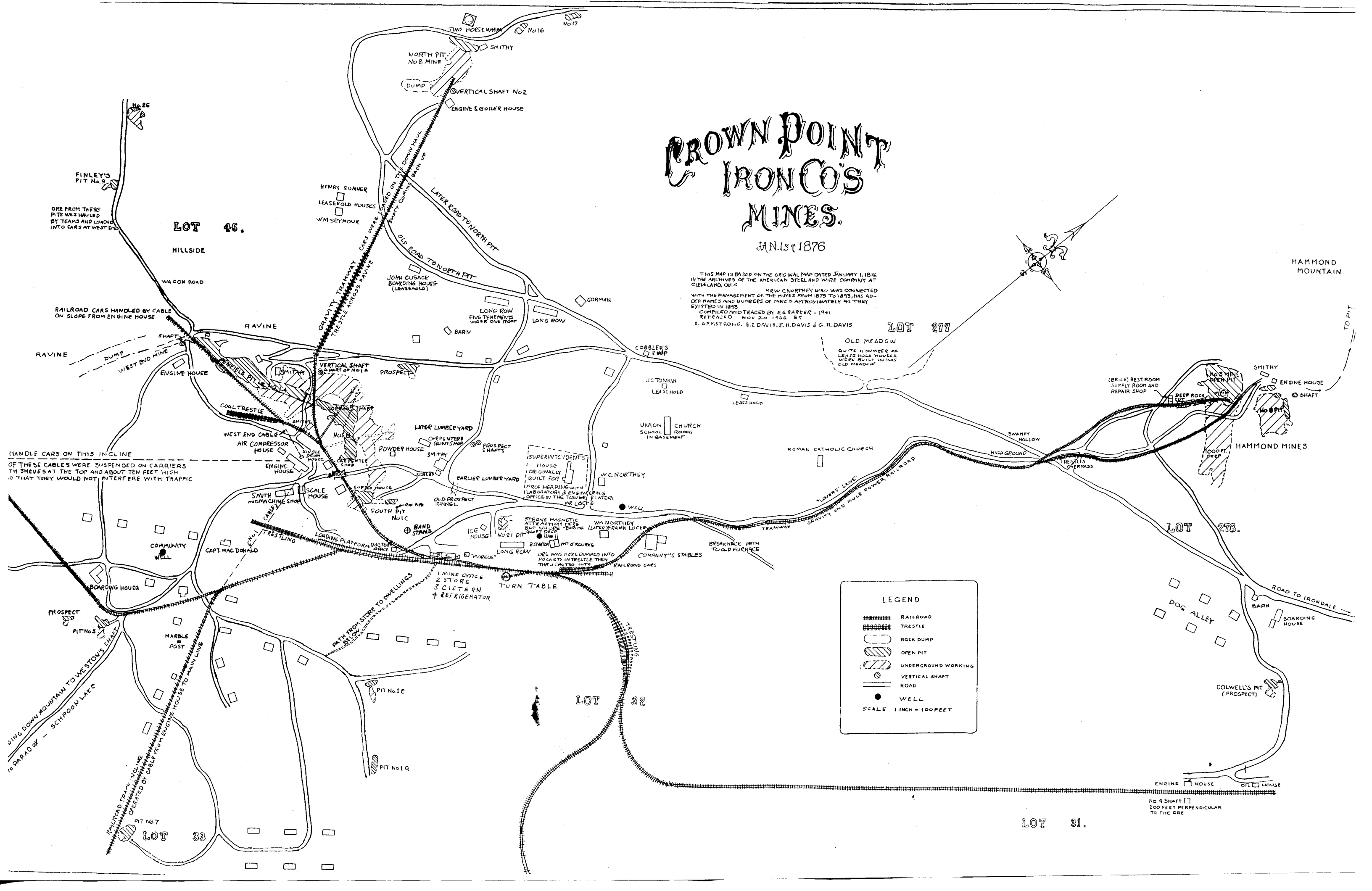
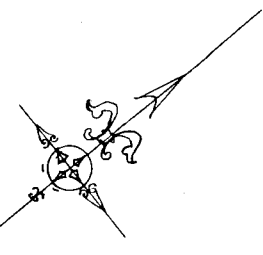


CROWN POINT IRON CO'S MINES.

JAN. 1st 1876

THIS MAP IS BASED ON THE ORIGINAL MAP DATED JANUARY 1, 1876, IN THE ARCHIVES OF THE AMERICAN STEEL AND WIRE COMPANY AT CLEVELAND, OHIO. MR. W. C. NORTHEY WHO WAS CONNECTED WITH THE MANAGEMENT OF THE MINES FROM 1875 TO 1893, HAS ADDED NAMES AND NUMBERS OF MINES APPROXIMATELY AS THEY EXISTED IN 1893. COMPILED AND TRACED BY E. C. BARKER - 1941. RE-TRACED NOV. 20, 1946 BY S. ARMSTRONG, E. Z. DAVIS, J. H. DAVIS & G. R. DAVIS.



LEGEND

- RAILROAD
- TRESTLE
- ROCK DUMP
- OPEN PIT
- UNDERGROUND WORKING
- VERTICAL SHAFT
- ROAD
- WELL

SCALE 1 INCH = 100 FEET

ORE FROM THESE PITS WAS HAULED BY TEAMS AND LOADED INTO CARS AT WEST END

HANDLE CARS ON THIS INCLINE OF THESE CABLES WERE SUSPENDED ON CARRIERS WITH SHEAVES AT THE TOP AND ABOUT TEN FEET HIGH SO THAT THEY WOULD NOT INTERFERE WITH TRAFFIC

STRONG MAGNETIC ATTRACTION HERE BUT NO LIME-BORING (LATER FRANK LOCKE) ORE WAS HERE DUMPED INTO POCKETS IN TRESTLE THEN THROUGH INTO RAILROAD CARS

No. 4 SHAFT [] 200 FEET PERPENDICULAR TO THE ORE